

## Assembly of our UNSPLASH M01 on your Fork

Downhill | Enduro | Trail | All Mountain | Marathon | XC | 20"-29"

1. Please open the packaging at the point shown below.



## Assembly of our UNSPLASH M01 on your Fork

Downhill | Enduro | Trail | All Mountain | Marathon | XC | 20"-29"

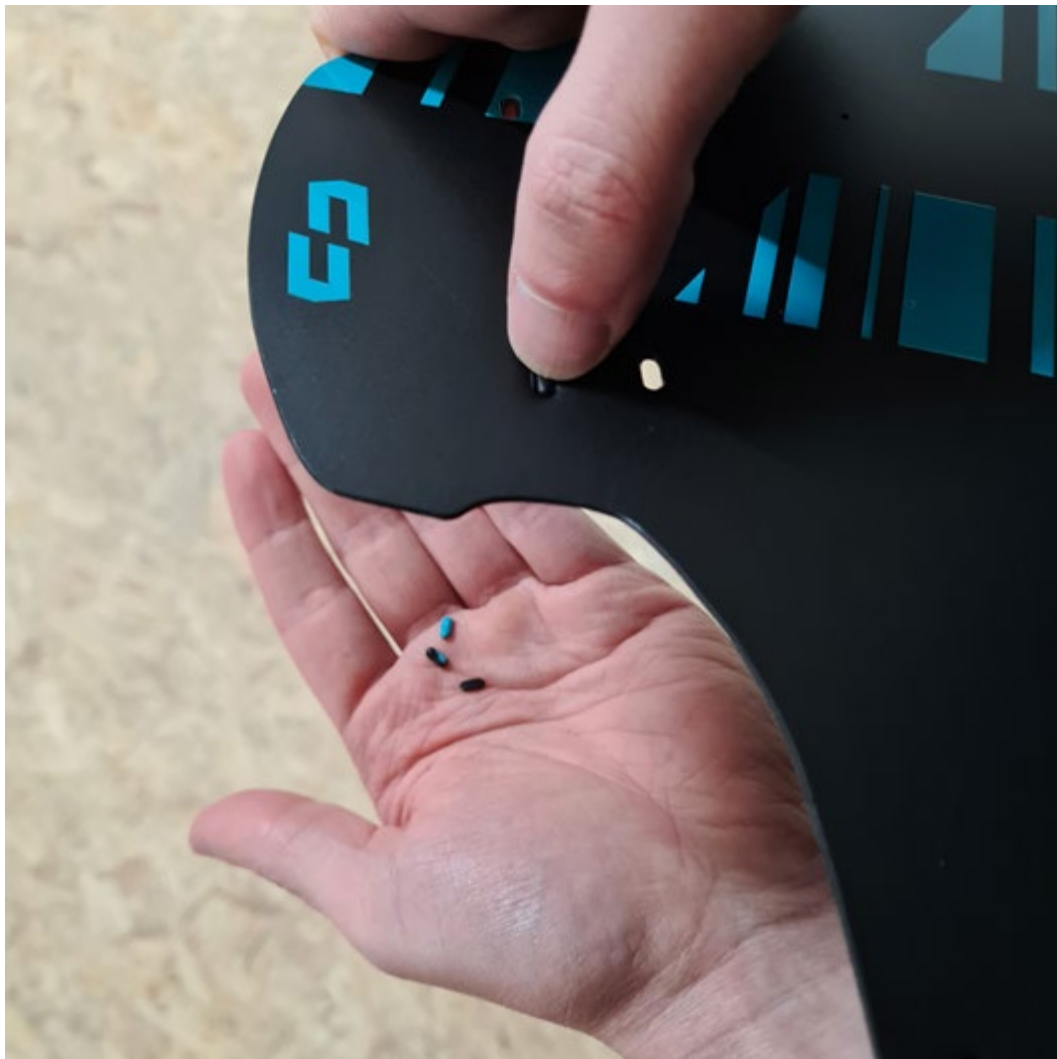
2. Remove the UNSPLASH M01 and the enclosed cable ties from the packaging.



### **Assembly of our UNSPLASH M01 on your Fork**

Downhill | Enduro | Trail | All Mountain | Marathon | XC | 20"-29"

3. Push out the stamped holes to fix the cable ties



### Assembly of our UNSPLASH M01 on your Fork

Downhill | Enduro | Trail | All Mountain | Marathon | XC | 20"-29"

4. Insert the cable ties into the shown holes. The longer cable ties are inserted at the side wings.





### Assembly of our UNSPLASH M01 on your Fork

Downhill | Enduro | Trail | All Mountain | Marathon | XC | 20"-29"

5. Place the UNSPLASH M01 as shown in the picture. Push the UNSPLASH M01 through your fork from behind.



### **Assembly of our UNSPLASH M01 on your Fork**

Downhill | Enduro | Trail | All Mountain | Marathon | XC | 20"-29"

6. Check the tyre clearance between your front wheel and the UNSPLASH M01.



### Assembly of our UNSPLASH M01 on your Fork

Downhill | Enduro | Trail | All Mountain | Marathon | XC | 20"-29"

7. Tighten the cable ties, first the upper ones and then the side ones. Then remove the ends. That's it! **Unleazh yourself!**





### Assembly of our UNSPLASH M01 on your suspension fork with a rear-facing fork bridge

Downhill | Enduro | Trail | All Mountain | Marathon | XC | 20"-29"

8. The assembly of your UNSPLASH M01 is done as described above. Only one further step is needed here. The marked points (2 pieces) must be drilled through with a drill. **Unleash yourself!**





### Assembly of our UNSPLASH M01 on your rear triangle

Downhill | Enduro | Trail | All Mountain | Marathon | XC | 20"-29"

9. Insert the cable ties into the side openings (point 4.) and place your UNSPLASH M01 as shown. If your rear frame has an additional frame bridge, you can use the additional holes as described in point 8.



## Assembly of our Unsplash M01 on your rear triangle

Downhill | Enduro | Trail | All Mountain | Marathon | XC | 20"-29"

10. Tighten the cable ties and remove the ends. That's it! **Unleazh yourself!**

